

645

Number of specialty behavioral health hospitals in the U.S. in 2020

FAST FACTS

Behavioral Health

11%

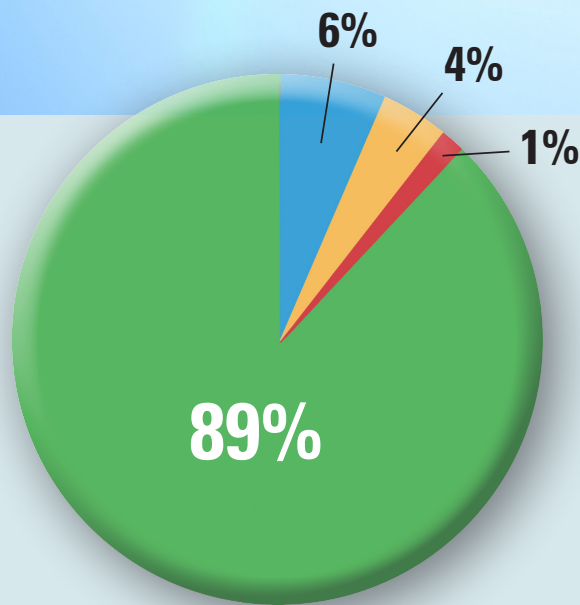
of all U.S. hospitals were specialty behavioral health hospitals

DEFINING BEHAVIORAL HEALTH

Behavioral health disorders include both mental illness and substance-use disorders. Persons with behavioral health care needs may suffer from either or both types of conditions as well as physical comorbidities.

47%

of behavioral health hospitals are investor-owned facilities



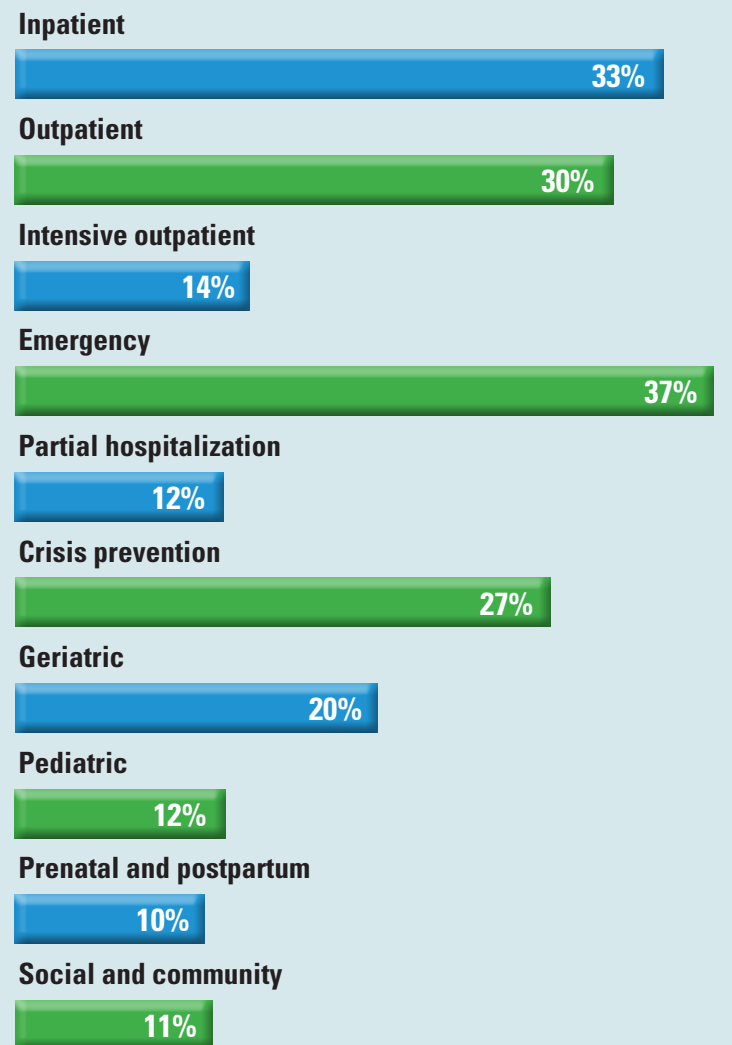
U.S. specialty behavioral health hospitals, 2020

- ▶ Psychiatric (N=573)
- ▶ Children's psychiatric (N=40)
- ▶ Substance-use disorder (N=27)
- ▶ Intellectual disabilities (N=5)

60

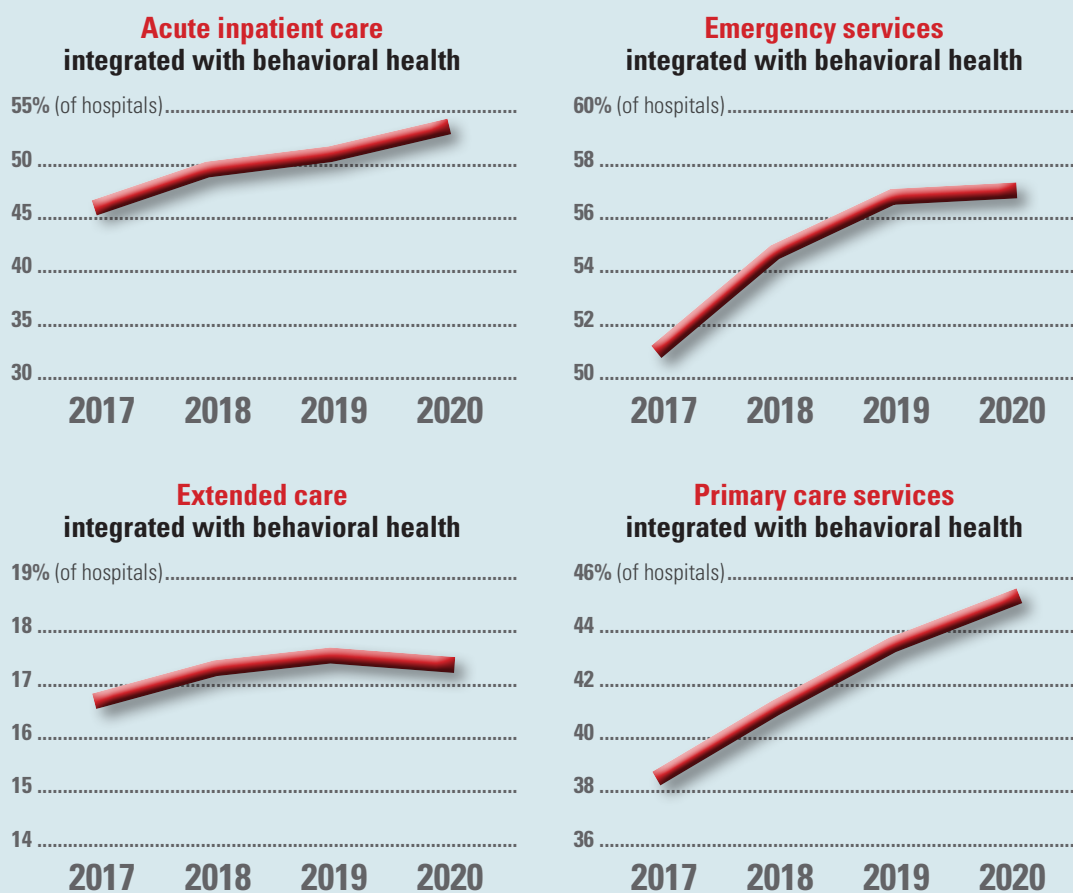
Increase in number of behavioral health hospitals since 2016

Community hospitals also provide a variety of psychiatric health services



Integrating behavioral health care

More than half of reporting U.S. hospitals have integrated behavioral health care with both acute care and emergency care



Suicide-prevention services in hospitals have increased fivefold since 2017

